

TIPOLOGIA B (NORTE)

ANTEPROYECTO

34 VIVIENDAS UNIFAMILIARES

NUEVO TRES CANTOS
Parcela R.U. 9

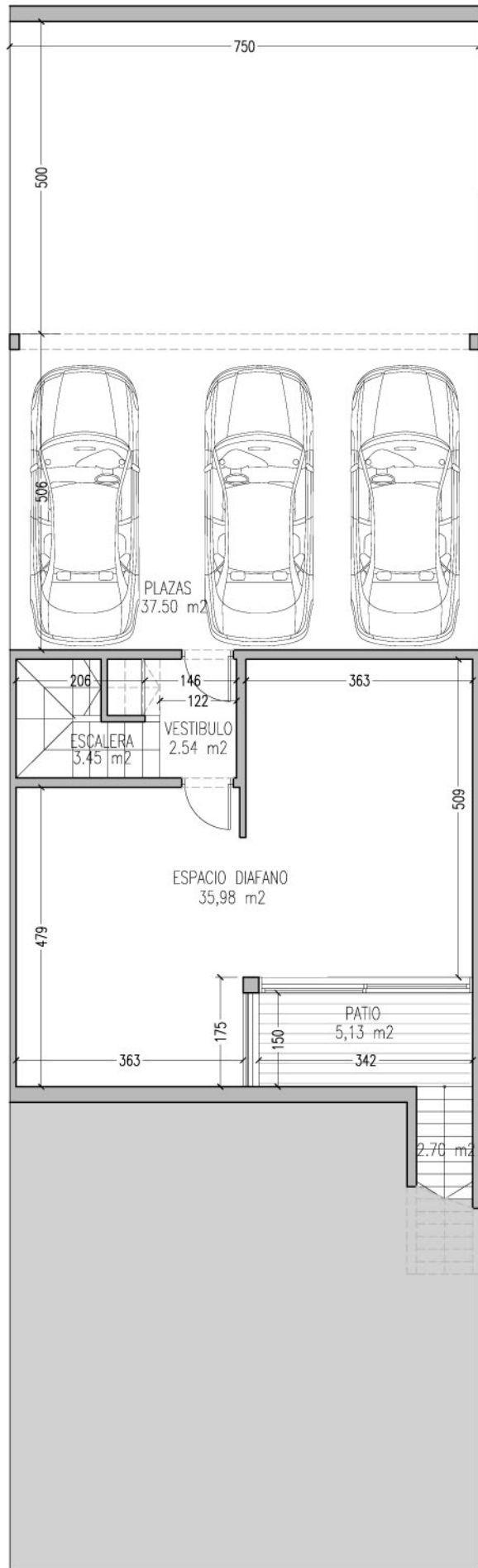
Vivienda libre

TIPOLOGIA B1

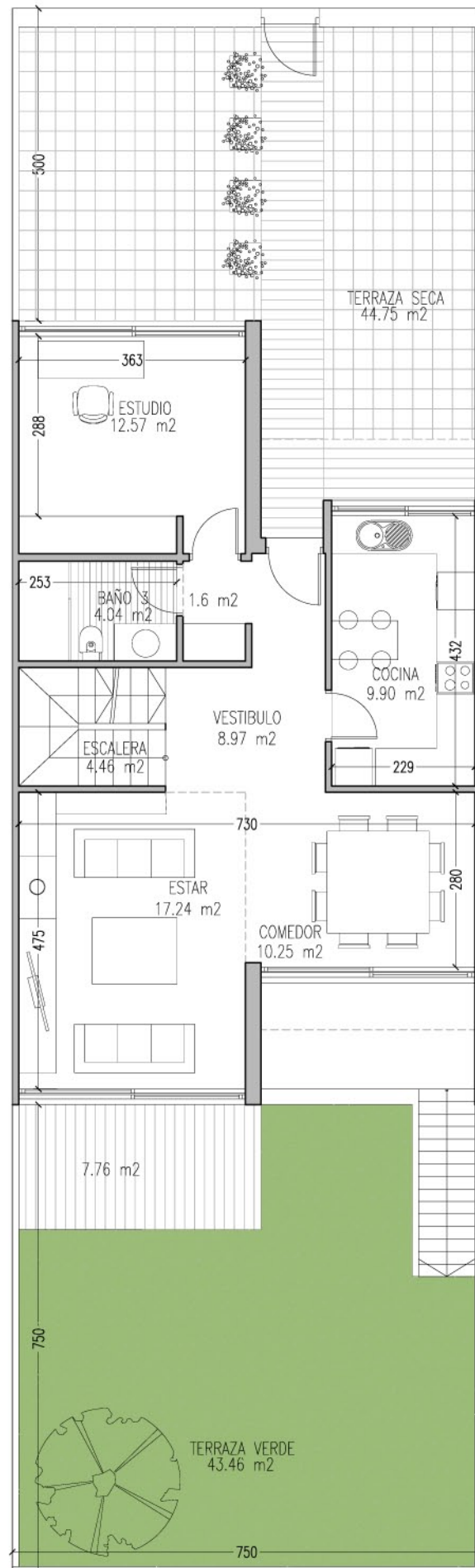
SUPERFICIES

Sup. Util	192.97m ²
Sup. Construida	261.09m ²

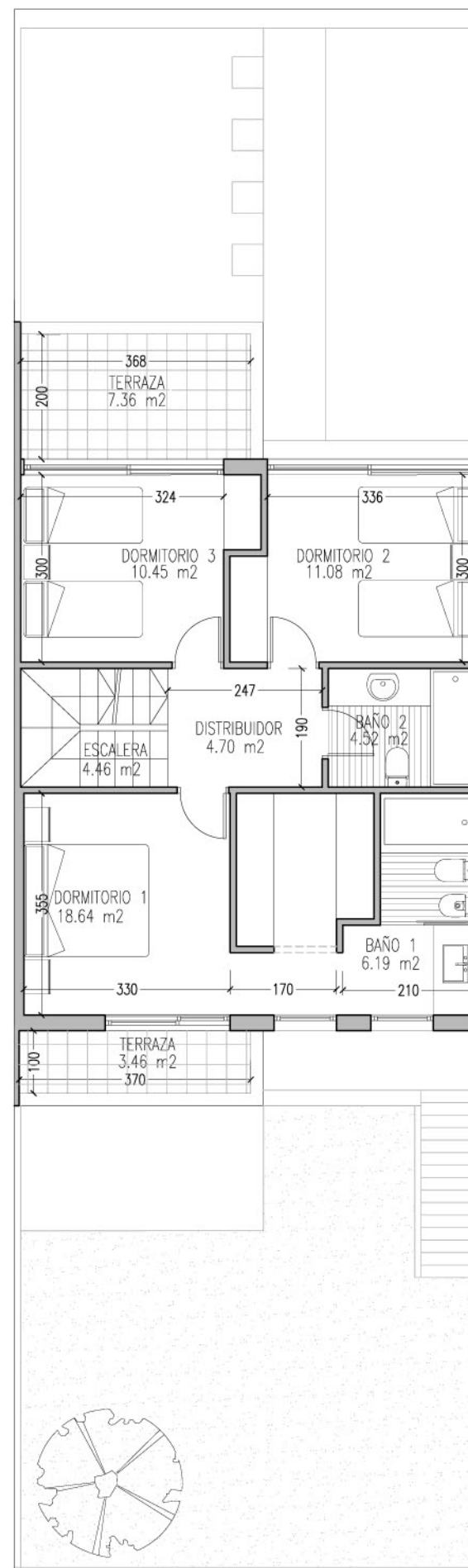
ENERO 2011



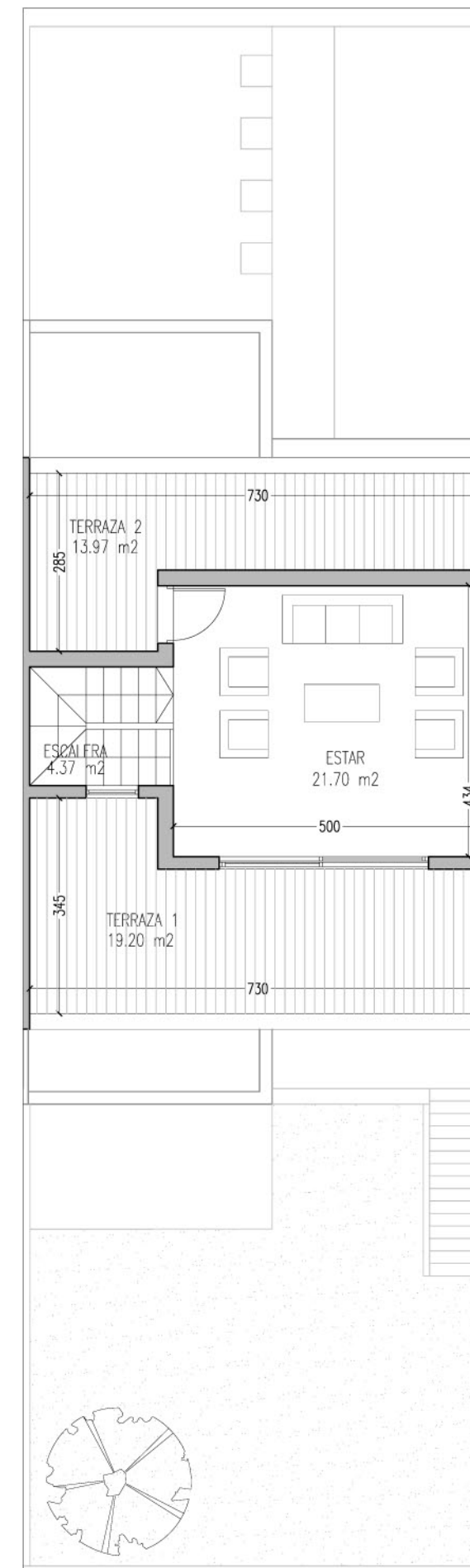
PLANTA SOTANO 86.09 m²



PLANTA BAJA 76.54 m²



PLANTA PRIMERA 68.62 m²



PLANTA ATICO 29.84 m²