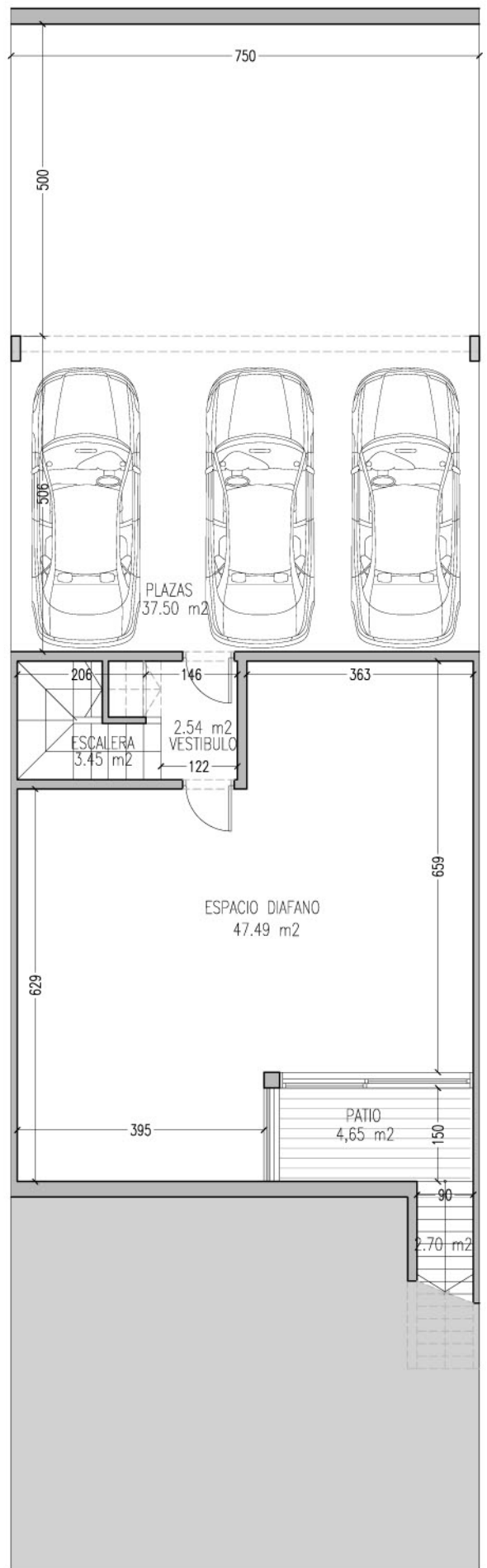
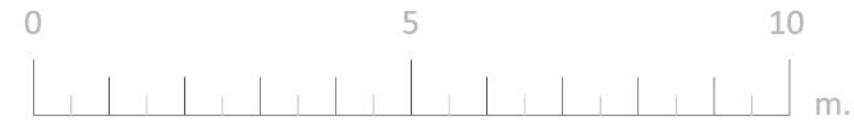
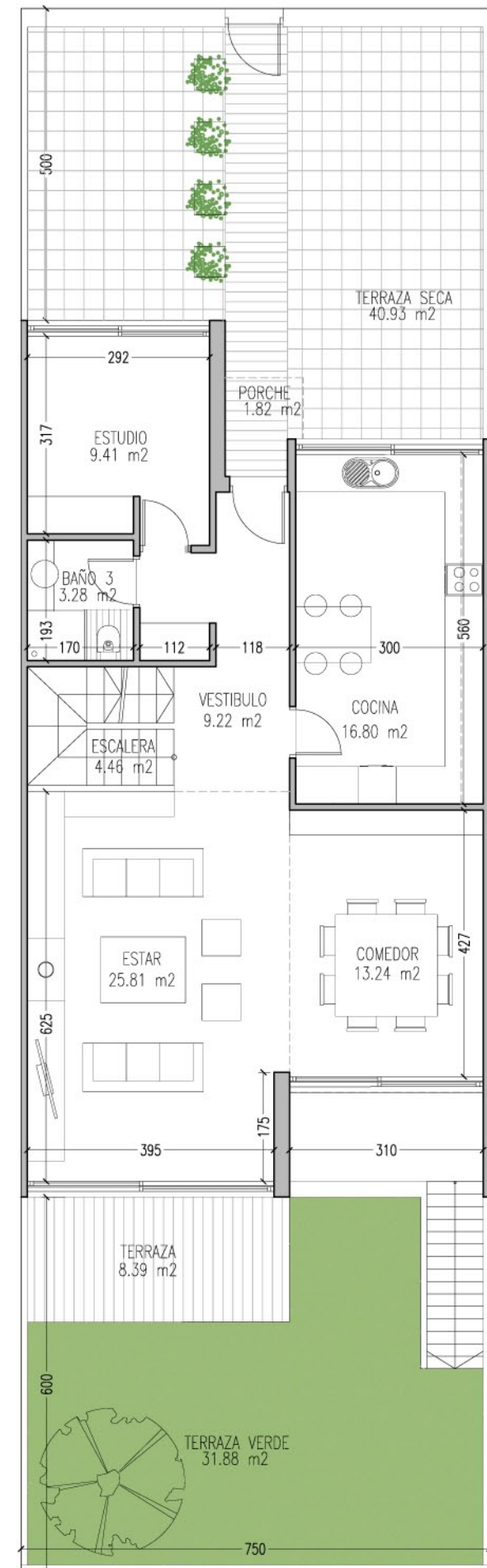


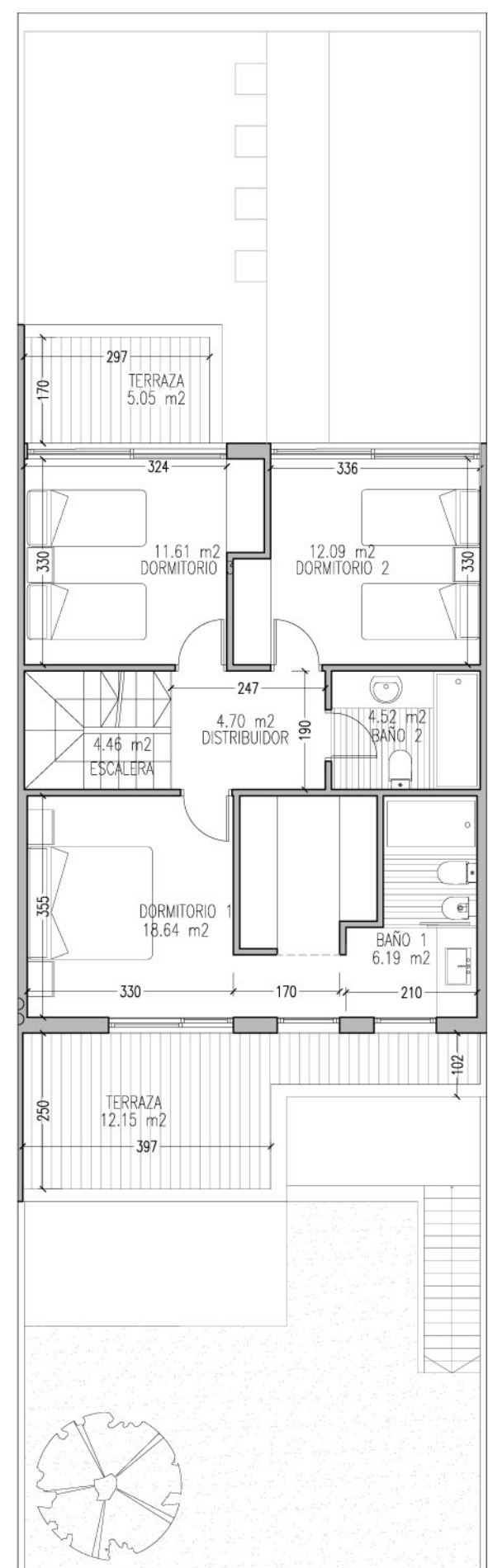
TIPOLOGIA B2 (NORTE)



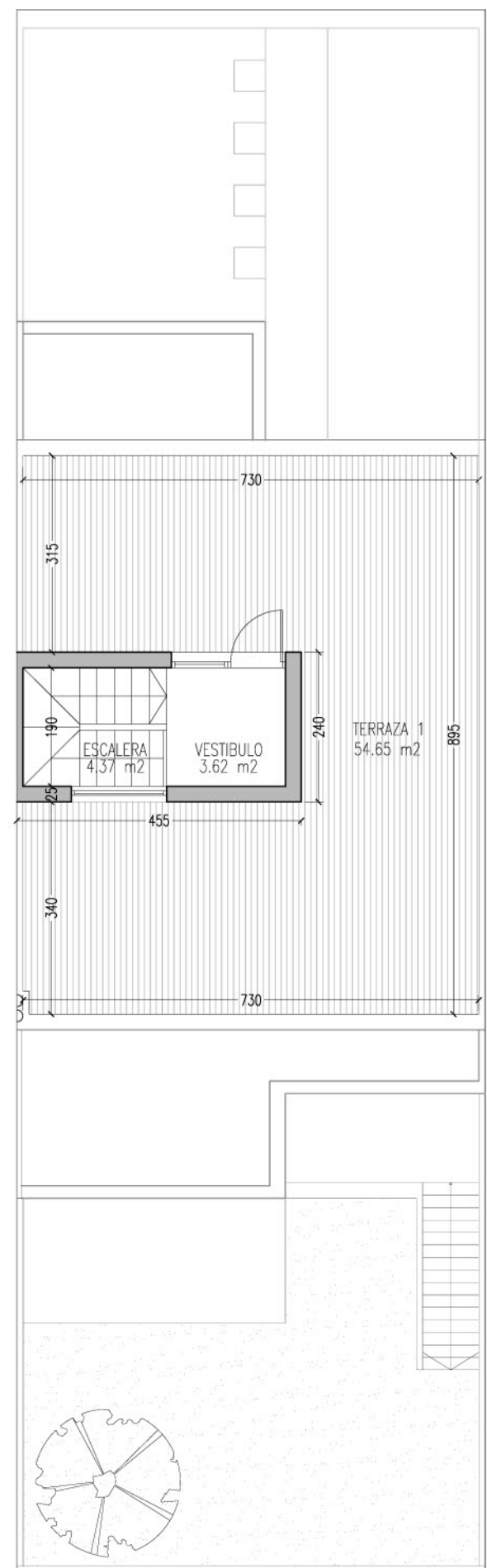
PLANTA SOTANO 97.91 m²



PLANTA BAJA 91.37 m²



PLANTA PRIMERA 70.88 m²



PLANTA ATICO 10.93 m²

ANTEPROYECTO

34 VIVIENDAS UNIFAMILIARES

NUEVO TRES CANTOS
Parcela R.U. 9

Vivienda libre

TIPOLOGIA B2

SUPERFICIES

Sup. Util	203.17m ²
Sup. Construida	271.09m ²

ENERO 2011



SERTA arquitectos