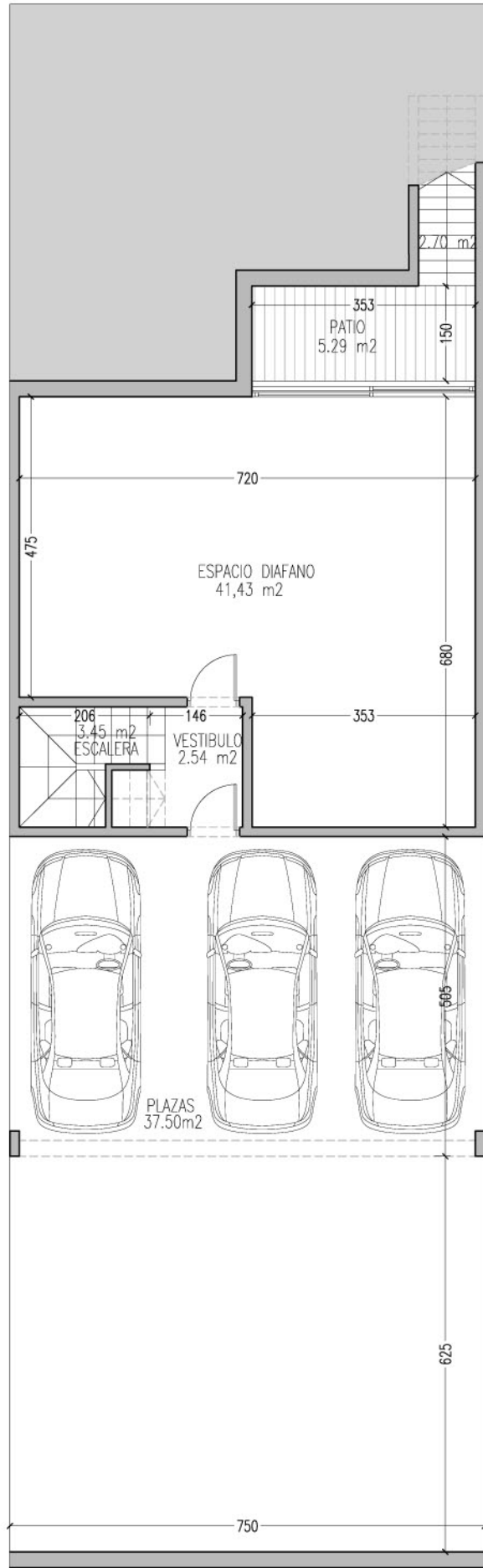
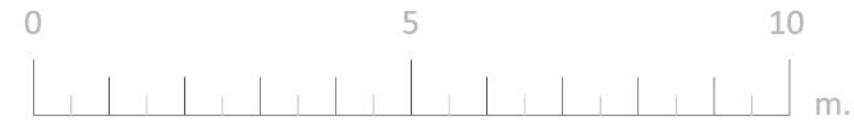
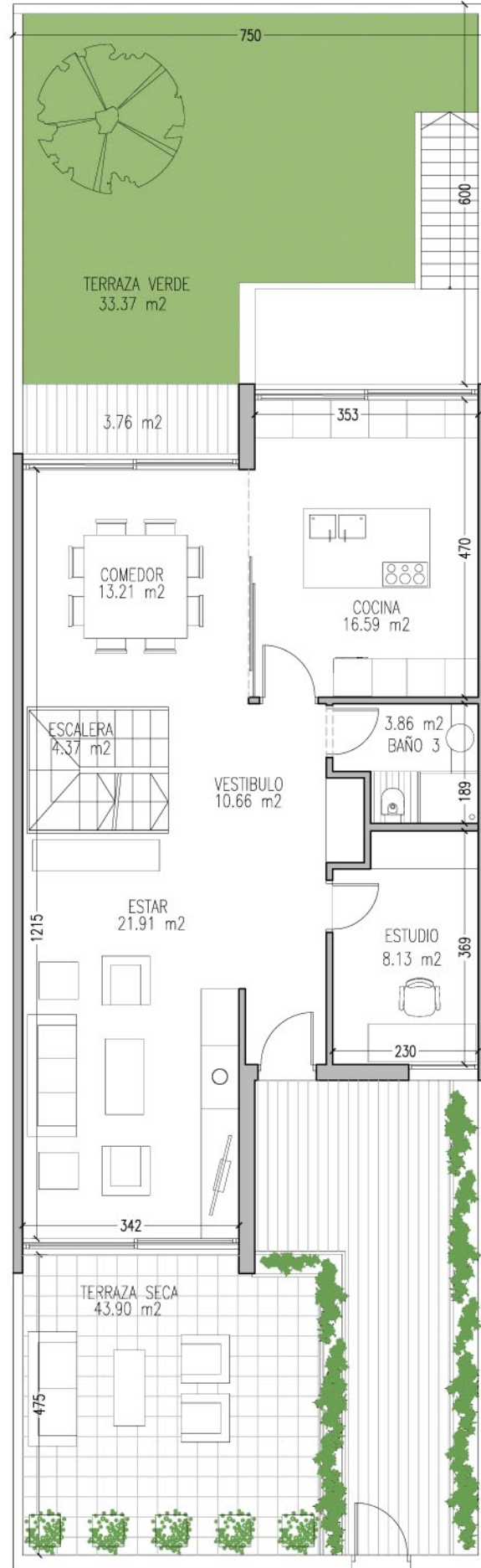


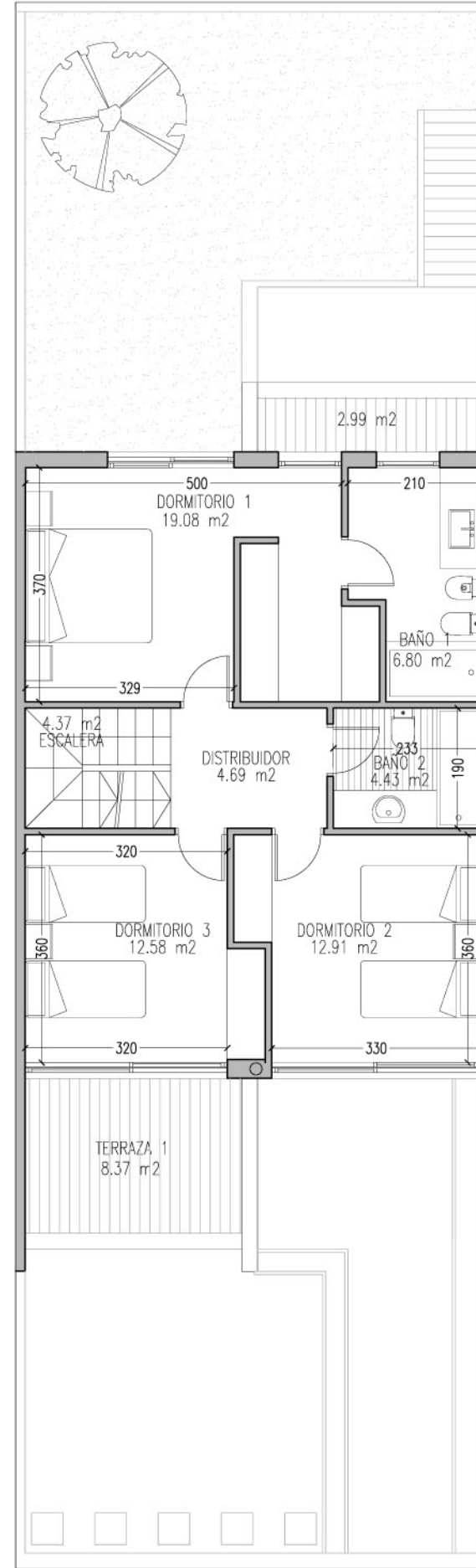
TIPOLOGIA C2 (SUR)



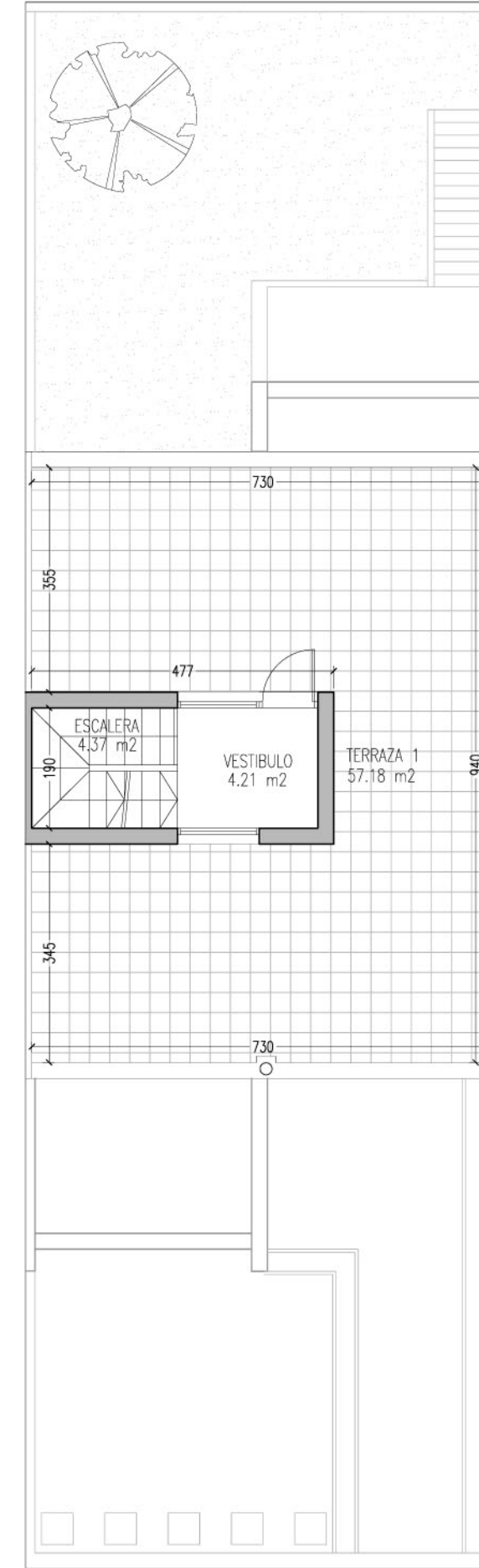
PLANTA SOTANO 91.88 m²



PLANTA BAJA 89.07 m²



PLANTA PRIMERA 74.25 m²



PLANTA ATICO 11.68 m²

ANTEPROYECTO

34 VIVIENDAS UNIFAMILIARES

NUEVO TRES CANTOS
Parcela R.U. 9

Vivienda libre

TIPOLOGIA C2

SUPERFICIES

Sup. Util	197.05m ²
Sup. Construida	266.88m ²

ENERO 2011