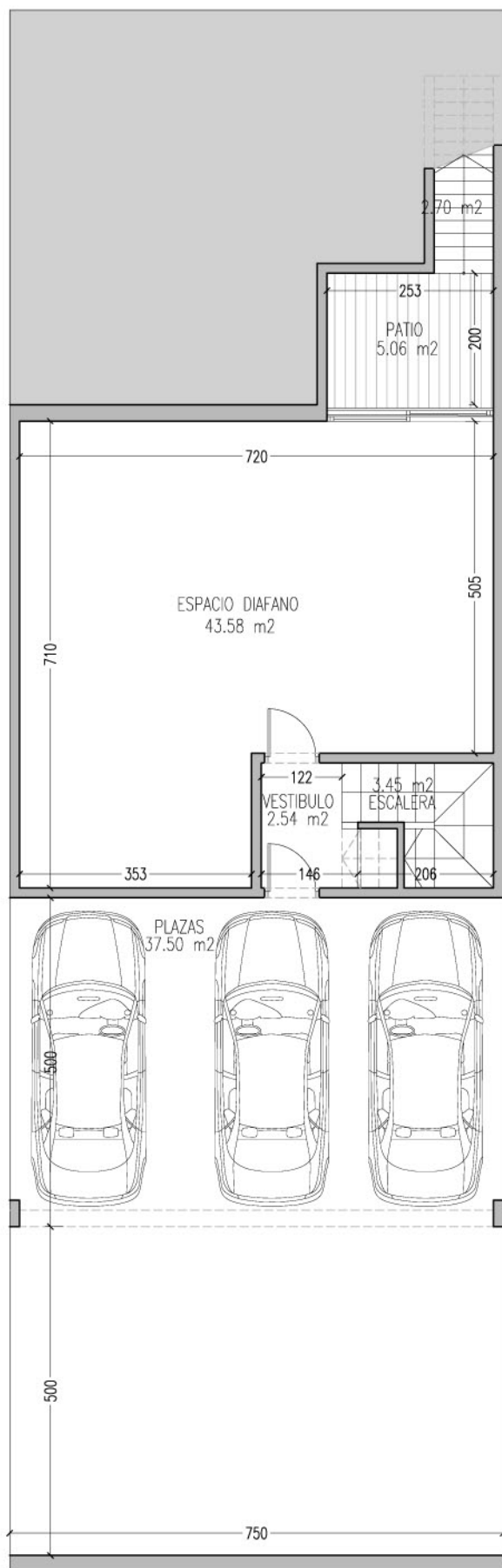
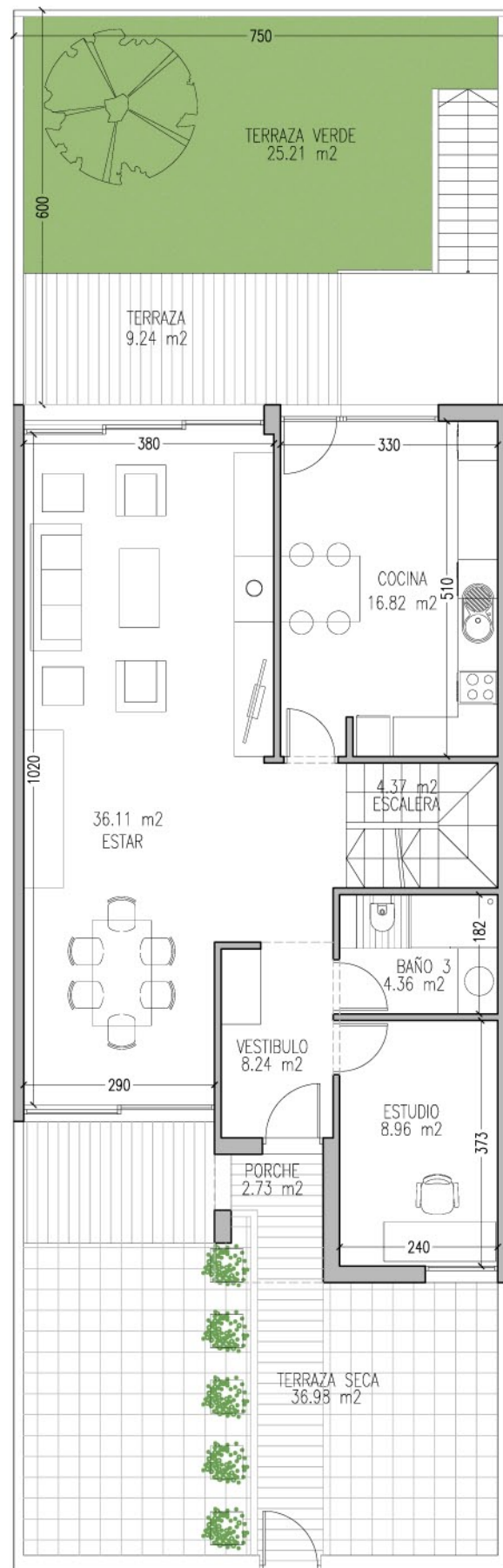


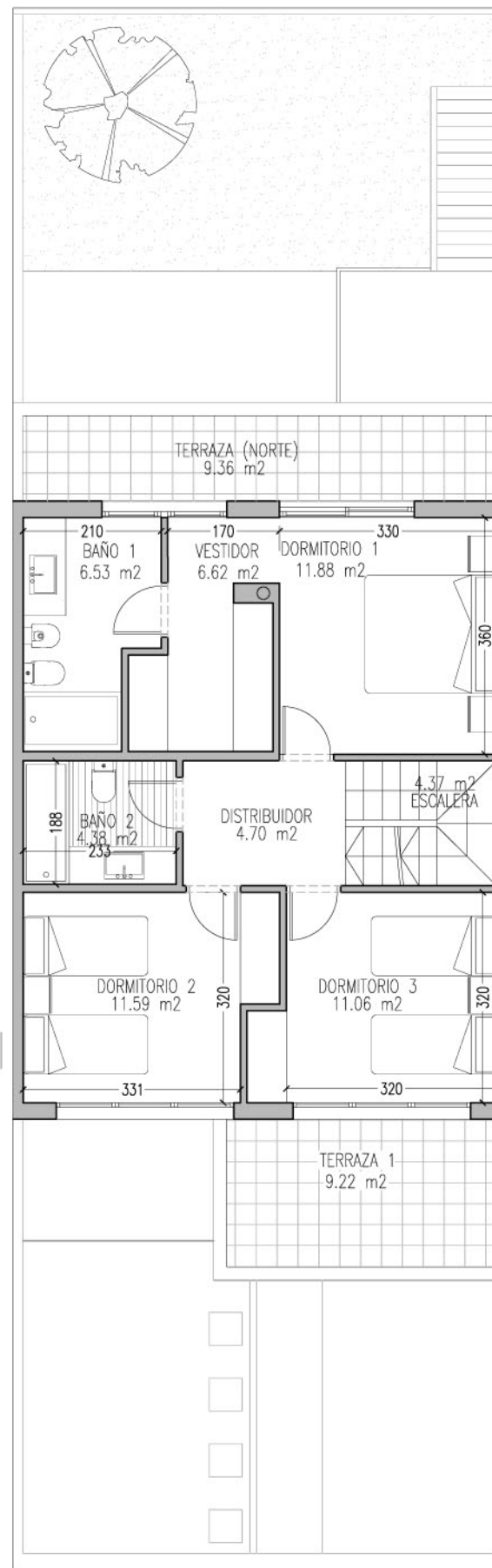
TIPOLOGIA D2 (SUR)



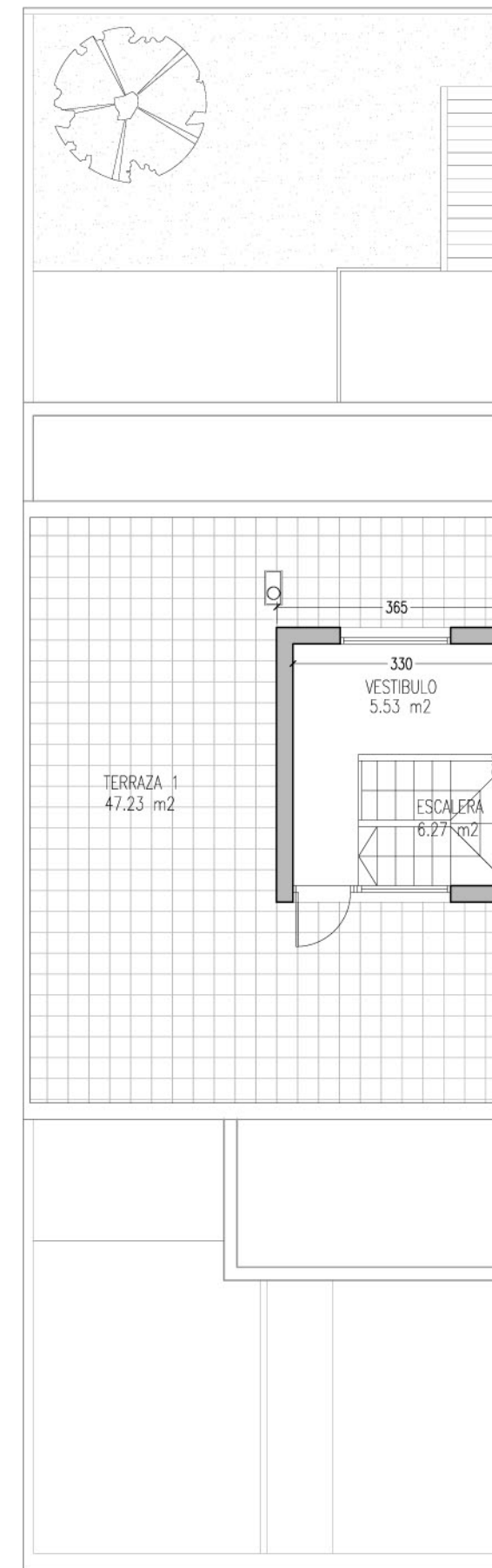
PLANTA SOTANO 93,75 m²



PLANTA BAJA 89.43 m²



PLANTA PRIMERA 70,50 m²



PLANTA ATICO 15.07 m²

ANTEPROYECTO

34 VIVIENDAS UNIFAMILIARES

NUEVO TRES CANTOS
Parcela R.U. 9

Vivienda libre

TIPOLOGIA D2

SUPERFICIES

Sup. Util	198.71m ²
Sup. Construida	268.74m ²

ENERO 2011