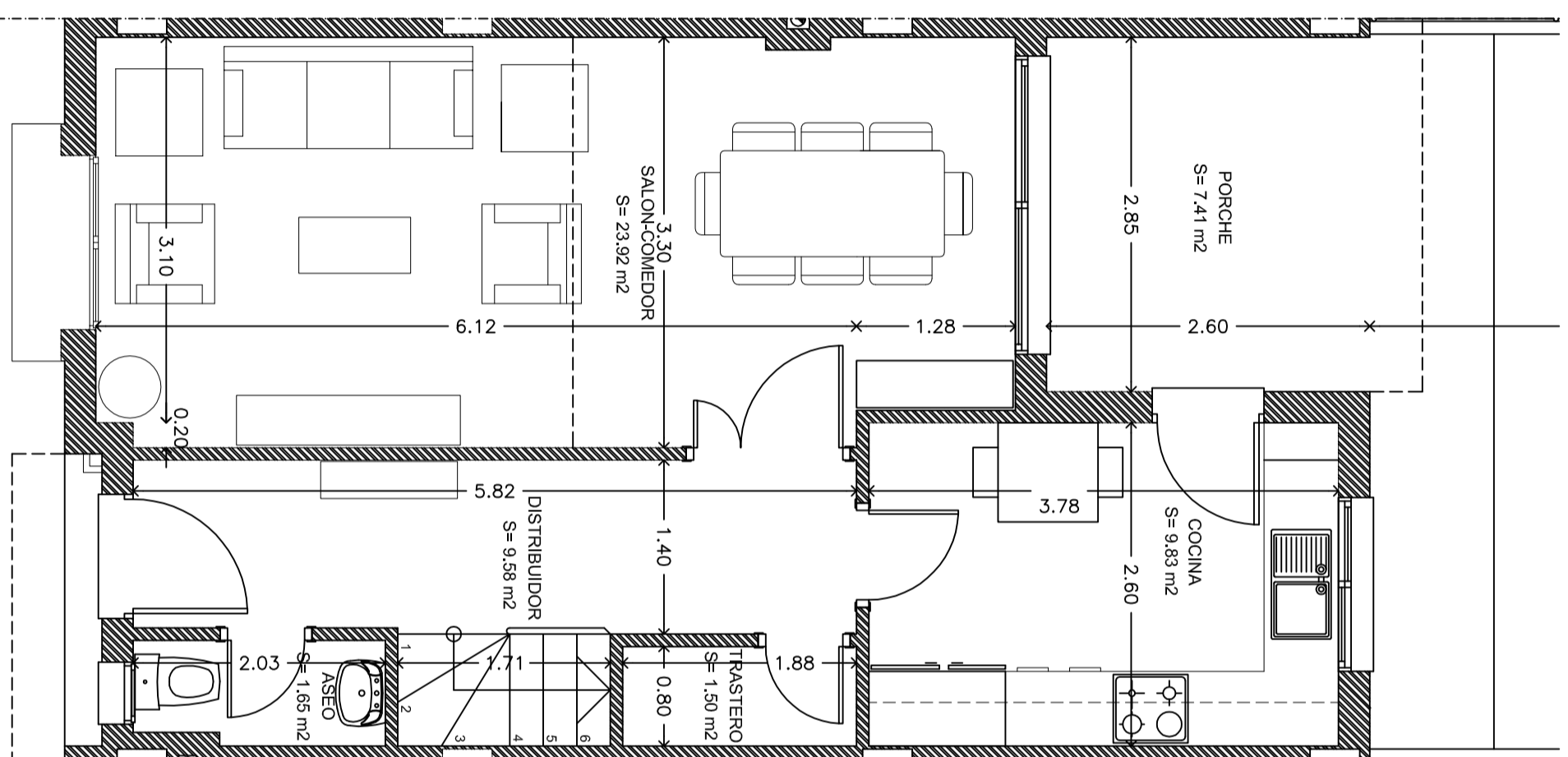


PLANO VIVIENDA (Planta baja)
 ESCALA: 1/50



TIPO B (ADOSADOS)

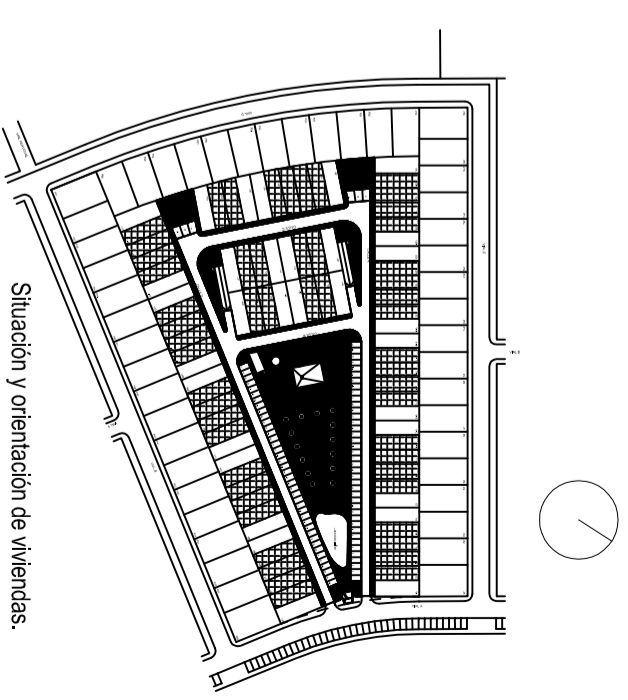
SUP. ÚTIL

Vivienda.....115.15 m²
 Porche (100%).....7.41 m²
 Sup. útil total.....122.56 m²

Azotea.....36.92 m²

SUP. CONSTRUIDA

Vivienda.....139.23 m²
 Porche (100%).....7.80 m²



Escala gráfica

