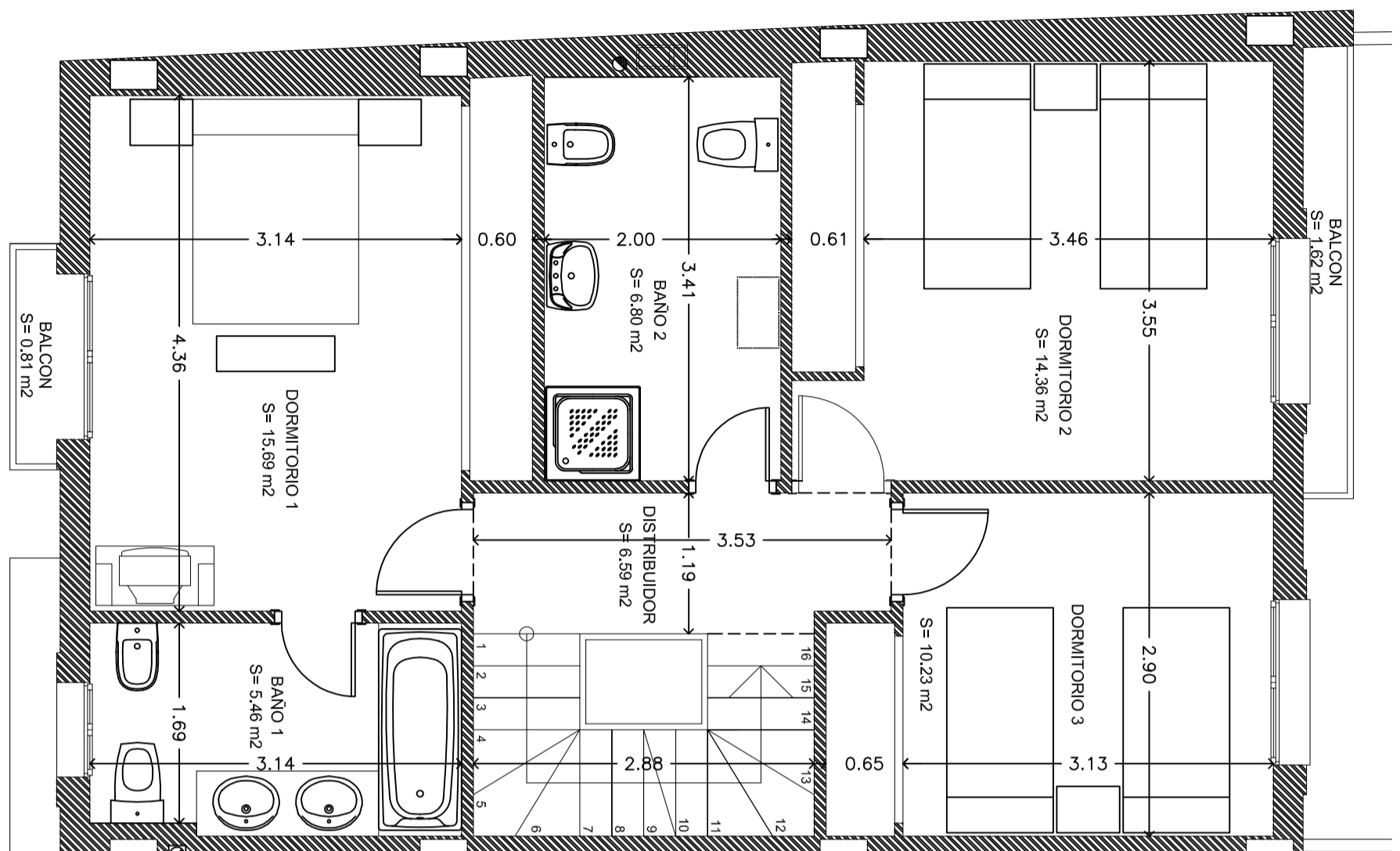
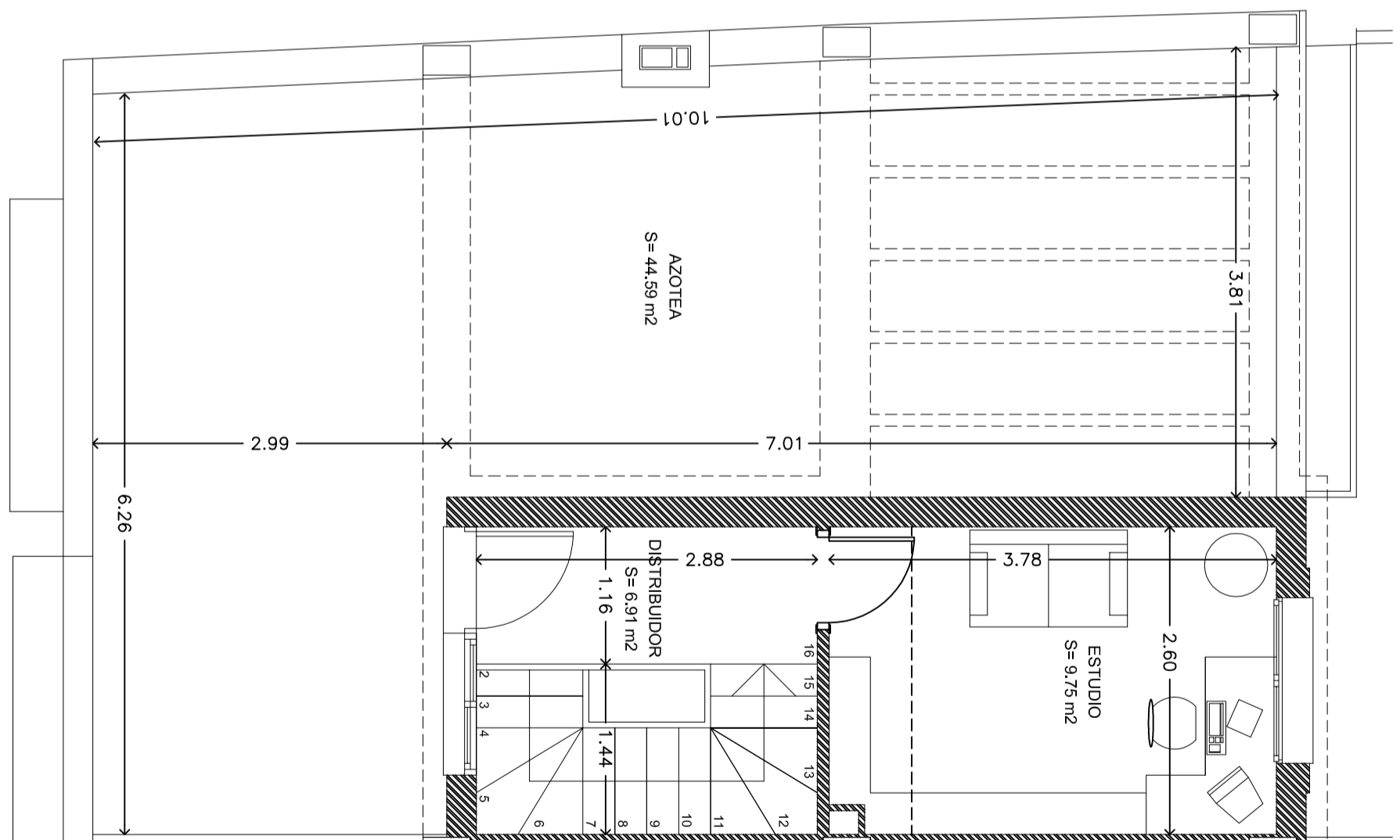


PLANO VIVIENDA (Planta primera)  
 ESCALA: 1/50



PLANO VIVIENDA (Planta b.cubierta)  
 ESCALA: 1/50



**TIPO D (ADOSADOS)**

<b>SUP. ÚTIL</b>	
Vivienda.....	127.21 m <sup>2</sup>
Porche (100%).....	9.81 m <sup>2</sup>
Sup. útil total.....	137.02 m <sup>2</sup>
<b>SUP. CONSTRUIDA</b>	
Vivienda.....	155.93 m <sup>2</sup>
Porche (100%).....	10.60 m <sup>2</sup>
Azotea.....	44.59 m <sup>2</sup>

Escala gráfica

