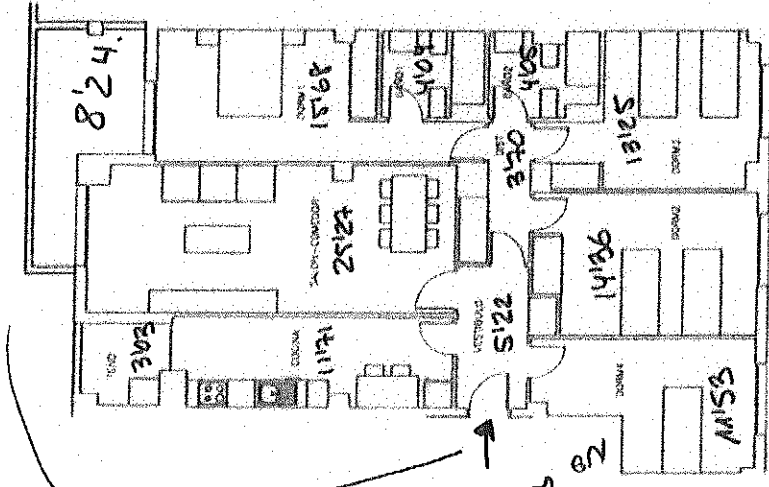
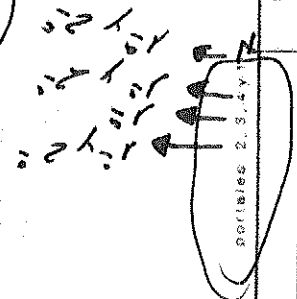


241 VPPA-OC, TRASTEROS, GARAJES Y LOCALES COMERCIALES EN PARCELA M19 SOTO DEL HEMERES. TORREJÓN DE ARDOZ, MADRID

T-35350

Plata y Trastero incluido
 232 m²
 232 m²

Plata y Trastero incluido.
 + 130 m² Comunidad.
 787,14 m² Max.
 Pnt. Use. Blanco
 Coc. Ferramuesboda
 Calle



psuna

NB area o carpeta de + pequeño

114,45 m²

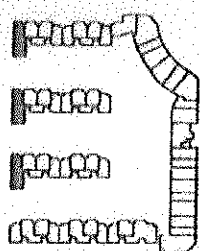
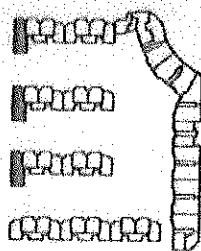
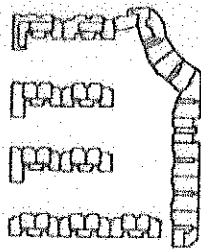
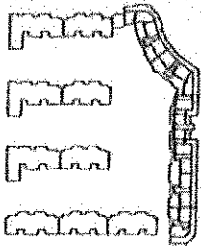
plantas 1º, 2º, 3º y 4º

Nº DE VIVIENDAS

TOTAL SUPERFICIE ÚTIL: 114,45 m²

VIVIENDA TIPO 3

24



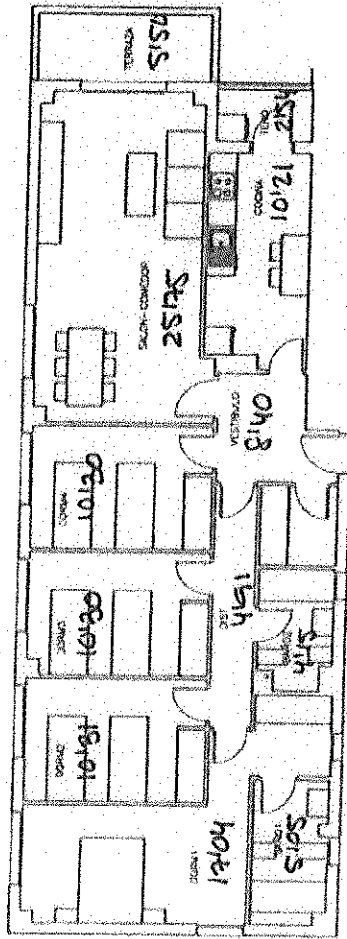
241 VFFA-OC, TRASTEROS,
GARAJES Y LOCALES
COMERCIALES EN PARCELA M19,
BOTO DEL HENARES,
TORREJÓN DE AROZ, MADRID



parking

*763'39
T 130 e 150E*

*2 bajas
Nave/ 110 m² ch/e*

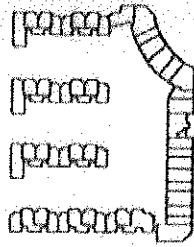
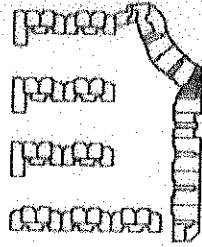
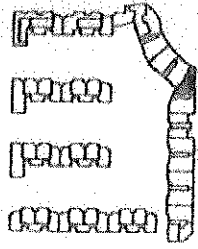
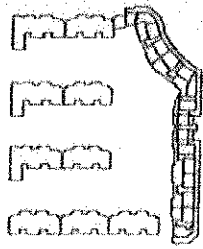


plantas bñia, 1^a, 2^a y 3^a
porites 8, 10 y 12

Nº DE VIVIENDAS 12

Vivienda tipo 12

TOTAL SUPERFICIE ÚTIL 110,84 m²



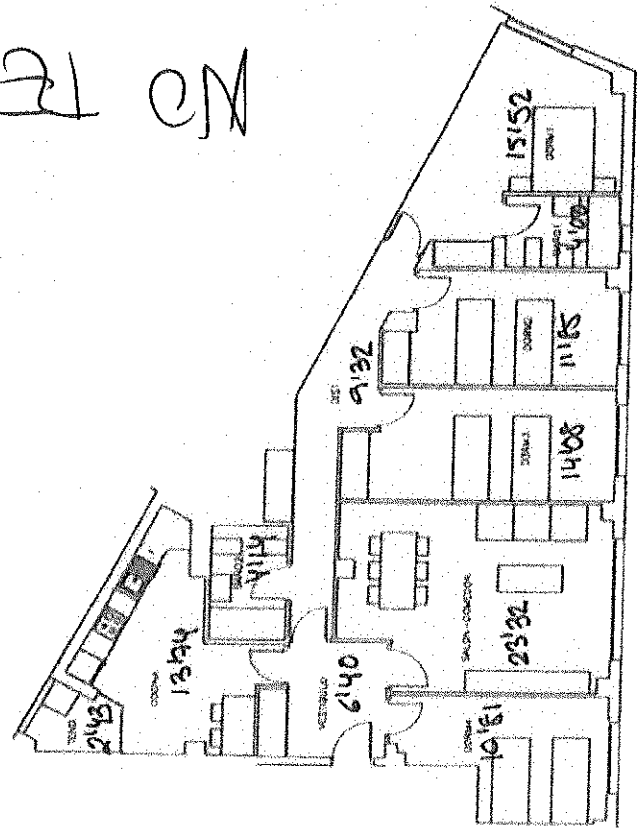
241 VIVIENDAS, TRASTEROS,
GARAJES Y LOCALES
COMERCIALES EN PARCELA M18,
SOTO DEL HENAREZ,
TORREJÓN DE ARDOZ, MADRID

7/2018

78684

TOPOS

NO TERAZA



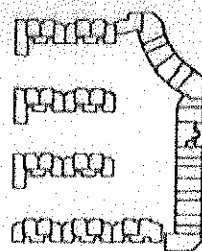
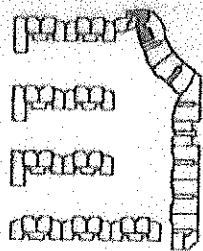
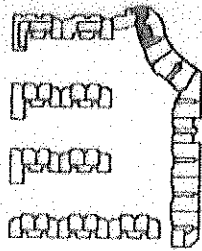
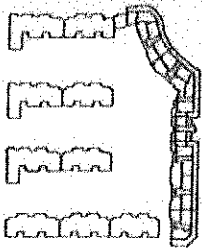
DISPOS. 11, 21, 24 y 25

EDIFICIO 17

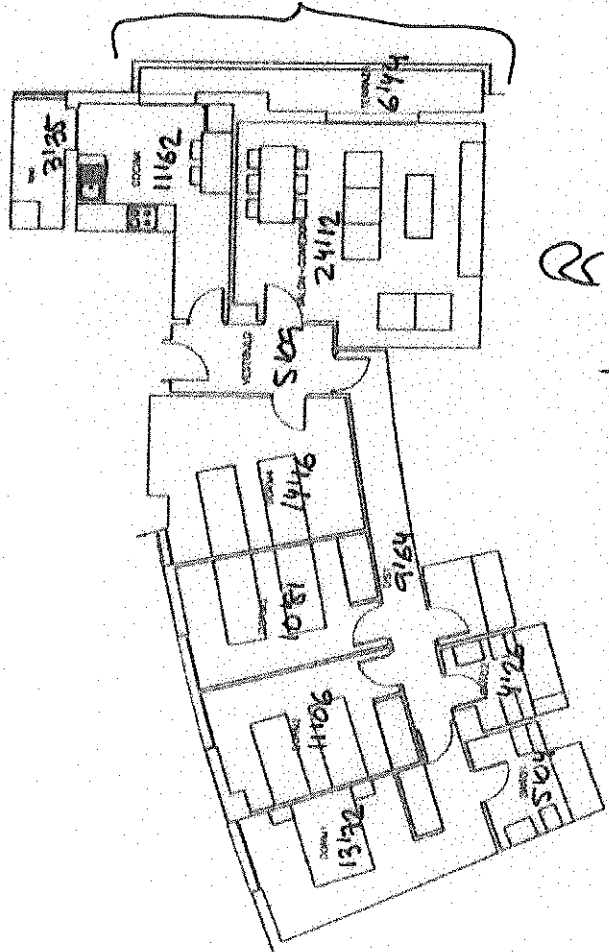
Nº DE VIVIENDAS

VIVIENDAS 100 22

TOTAL SUPERFICIE 114 40 m²



241 VIVIENDAS, TRÁSTEROS,
GARAJES Y LOCALES
COMERCIALES EN PARCELA M18,
SOTO DEL MENARES,
TORREJÓN DE ARDOZ, MADRID

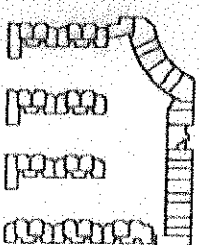
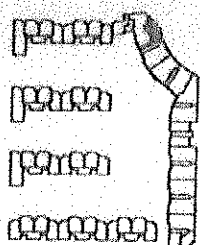
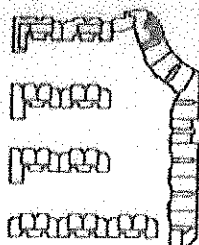
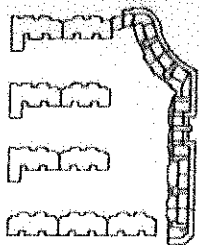


TERRAZA

783,85
+ 130 = 150

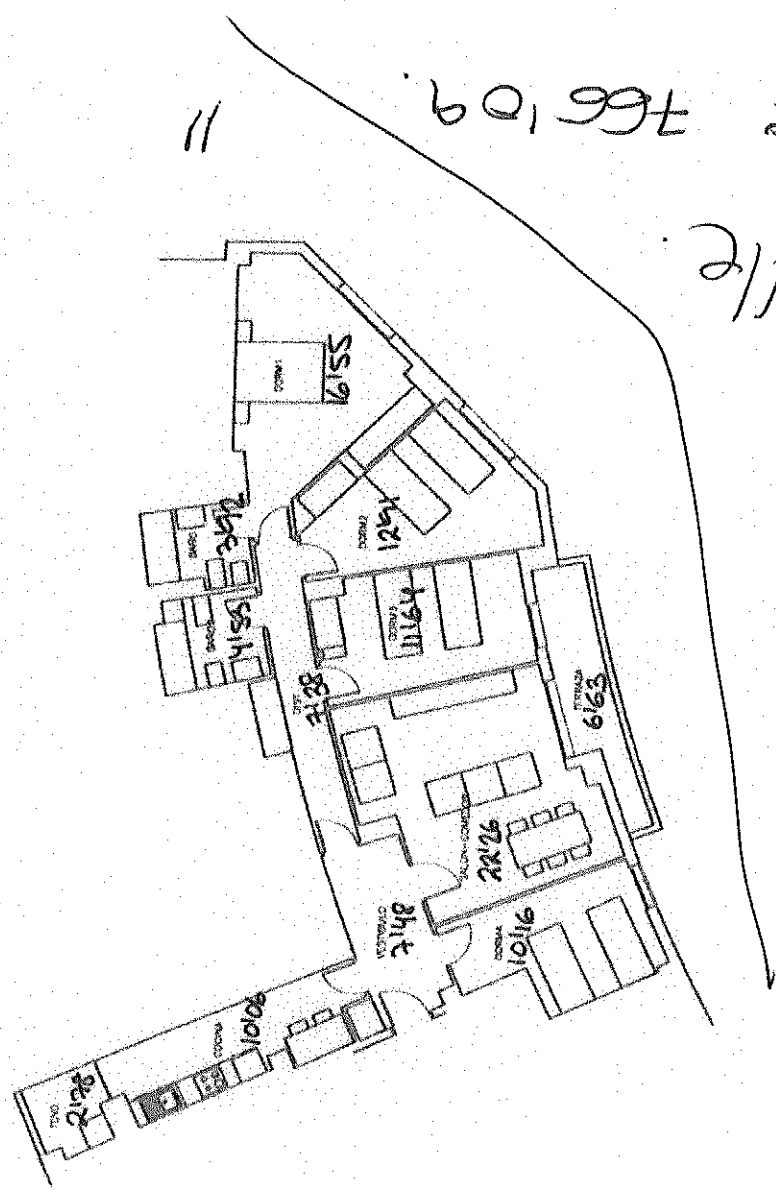
TRDAS las 4^{as} bnt

vivienda tipo 15	DIPTOS 14, 2º, 3º, 4º	Nº DE VIVIENDAS
TOTAL SUPERFICIE ÚTL. 114,42 m ²		



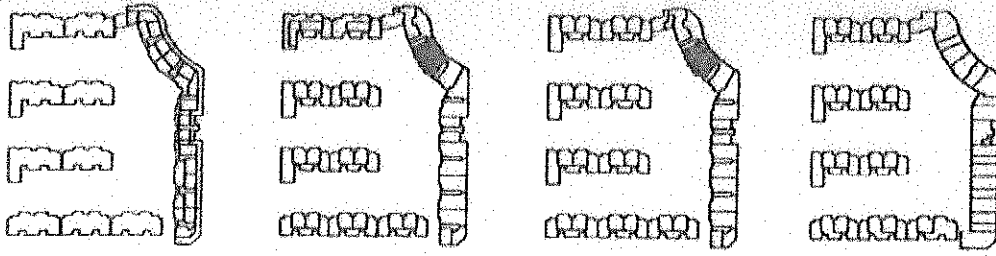
PLANTA DE VIVIENDAS
 CASAS Y LOCALS
 CONSERVADOS EN PARCELA M19,
 SOTO DEL REINAR, TORREJÓN DE ARDOZ, MADRID

PLANTA



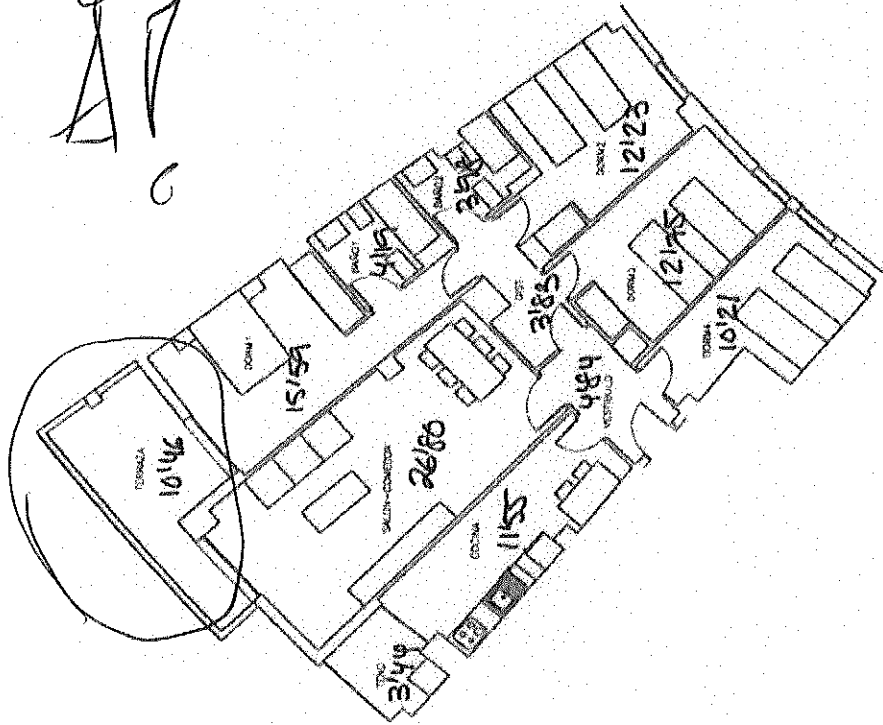
1-2-766109
 Calle

PROYECTO: 100 17	PLANTAS: 1, 2, 3, 4	Nº DE VIVIENDAS	4
TOTAL SUPERFICIE ÚTIL: 11.55 m ²			

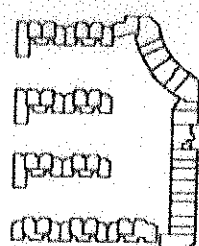
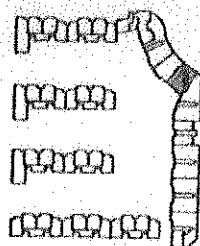
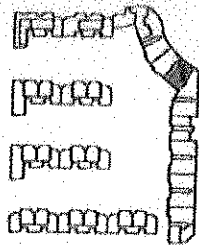
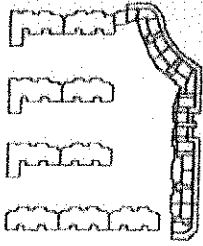


241 VPIA-OC, TRASTEROS, GARAJES Y LOCALES COMERCIALES EN LA CELA M15, SOTO DEL PERUÑES, TORREJÓN DE ARDOZ, MADRID

Solo 10^o 775'23 + 1300'1507



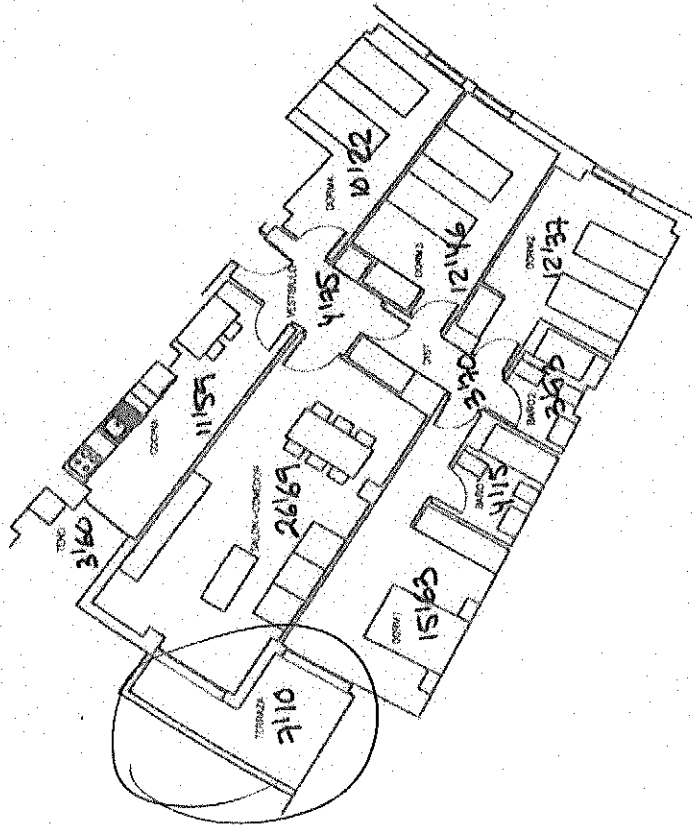
VIVIENDAS: 1100 16		plantas 1 ^o , 2 ^o , 3 ^o y 4 ^o	
TOTAL SUPERFICIE ÚTIL: 11292 m ²		Nº DE VIVIENDAS	
		8	



241 URBALOC, TRASTEROS,
CASAS Y LOCALS
COMERCIALES EN LA PUEBLA-1415,
BOTO DEL MENARISE,
TORREJON DE ARDOZ, MADRID

Primeros
764'63 €

TODAS



Plano 1º, 2º, 3º y 4º

Nº DE VIVIENDAS

plano 1º

VIVIENDAS 1:00 21

TOTAL SUPERFICIE UT 1:00 112