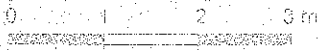
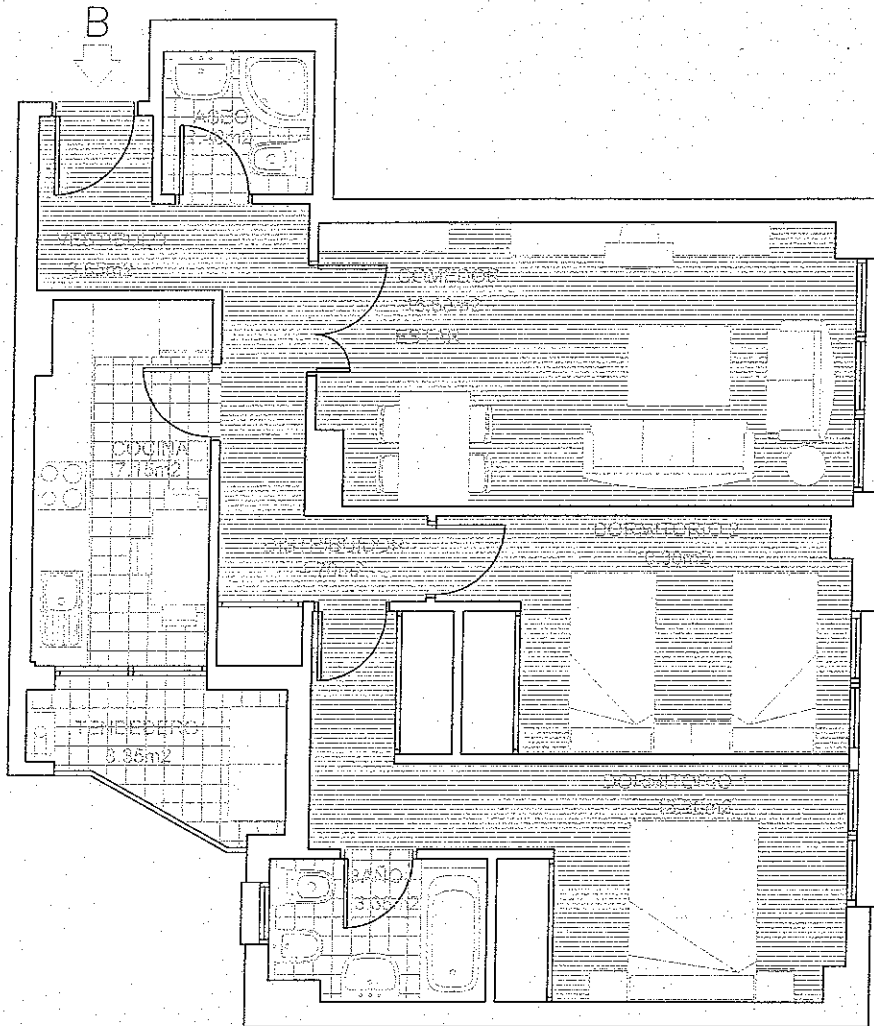




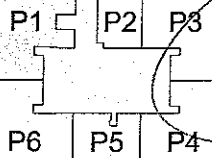
PARQUE RESIDENCIAL "RIBERA DEL HENARES" TORREJON DE ARDOZ.



EDIFICIO ABEDUL



PLANTA PRIMERA . PORTAL 1 . VIVIENDA B



SUPERFICIE UTIL VIVIENDA	64'70 m ²
SUP. UTIL TRASTERO N° 9	2'95 m ²
SUP. CONSTRUIDA TOTAL	89'80 m ²

